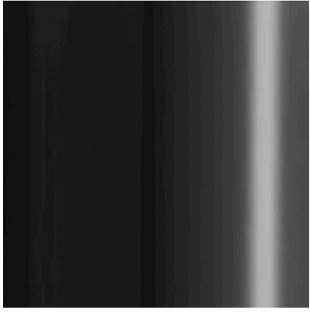
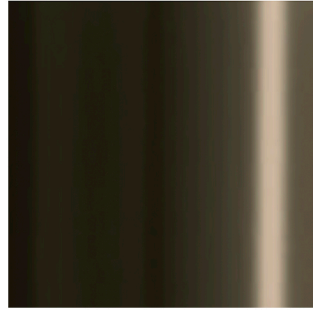


Metals



P15 Matt Black



P29L Matt Bronze



P46M Matt Pearl Beige

Ceramic

Ceramic-Glass

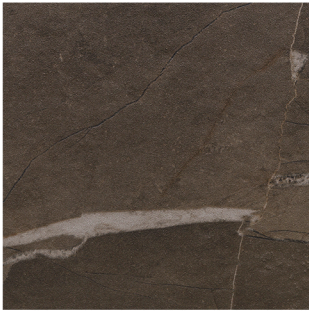
The ceramic-glass top is a self-holding product manufactured by coupling one ceramic plate (porcelain tile) to a floating glass thanks to a special process carried out in autoclave.

For the P5C, P6C, P14C, P18C, P32C, P321, P35C, P36C finishes, the ceramic plate thickness is 3 mm and is coupled with an 8 mm thick glass (for a total of 11 mm). For the P2C, P4C, P27C, P31C, P41C finishes, the ceramic plate thickness is 6 mm and is coupled with a 6 mm thick glass (for a total of 12 mm) or with a 12 mm thick glass (for a total of 18 mm).

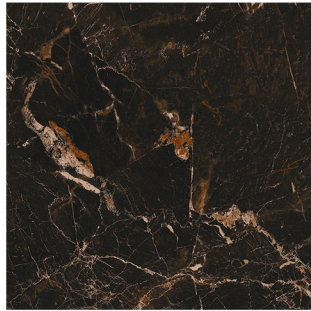
The porcelain tile is a ceramic material obtained using a mixture of stoneware composed by clay and valuable raw materials, which are mixed, body tinted, compacted whilst high pressure is applied and finally fired at 1200 °C.

The porcelain tile working surface features exceptional performances in terms of scratch, impact, stain, thermal shock and chemical resistance. It is easy to clean and very hygienic because it does not absorb liquids and does not release harmful substances.

Matt Finishes



P14C Bronze



P18C Calacatta Black



P35C Calacatta Paonazzo



P32C White Travertino



P36C Dolomite



P41C Touchstone

Glossy Finishes



P31C Calacatta Paonazzo