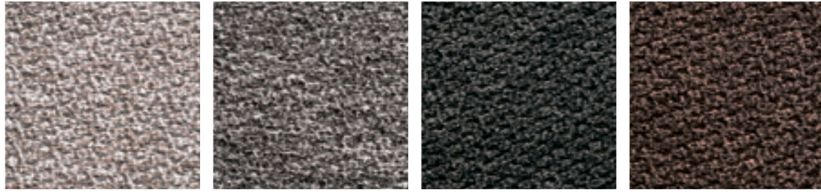


Category A / Categoría A



Habo



S8E
Ecru
Crudo

S8F
Light Grey
Gris Claro

S8H
Anthracite Grey
Gris Antracita

S8K
Brown
Marrón



100% PL gr/m² 330
Martindale 46.000 cicli/rubs - EN ISO 12947-2

Luxor



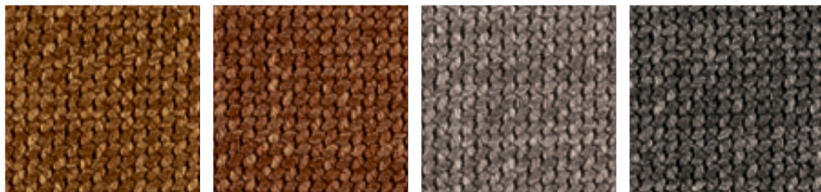
T5A
Hemp
Cáñamo

T5B
Ecru
Crudo

T5C
Sand
Arena

T5D
Cappuccino
Capuchino

T5E
Brown
Marrón



T5F
Amber
Ámbar

T5G
Dark Orange
Naranja Oscuro

T5H
Light Grey
Gris Claro

T5J
Dark Grey
Gris Oscuro



100%PL gr/m² 365
Martindale >50.000 cicli/rubs - EN ISO 5470-2 Met.1

Vintage



S0A
Desert
Desierto

S0B
Tobacco
Tabaco

S0C
Ebony
Ébano

S0W
Ash grey
Ceniza

S0X
Hemp
Cáñamo



80% PVC - 18% PL - 2% PU gr/m² 550
Martindale 50.000 rubs - EN ISO 5470-2 Met.1

Category A / Categoría A



Venice



S0F
Sand
Arena



S0G
Soil brown
Tierra



S0H
Forest green
Verde bosque



S0J
Ocean blue
Océano



S0K
Brick red
Rojo ladrillo



S0L
Ash grey
Ceniza



S0U
Pink
Rosa



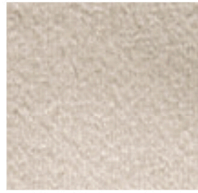
S0Y
Black
Negro



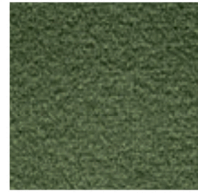
S0Z
Hemp
Cáñamo



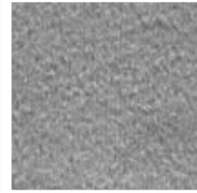
SVX
Ice
Hielo



SVY
Beige



SVZ
Green
Verde



SWA
Light grey
Gris claro



SWB
Mustard yellow
Mostaza



SWC
pale pink
Rosa palo



SWD
Amber
Ámbar



SWE
Blue
Azul



100% PL - gr/m² 430
Martindale >100.000 cicli/rubs - EN ISO 12947-2

Category B / Categoría B

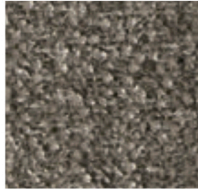


Anouk

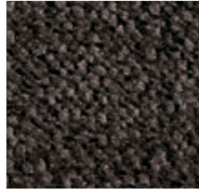
100% PL - gr/m² 520
Martindale 50.000 cicli/rubs - EN ISO 12947-2



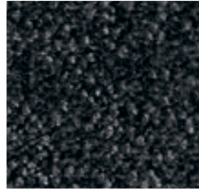
T3Q
Sand
Arena



T3R
Taupe
Tórtola



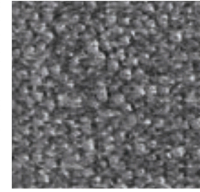
T3S
Soil Brown
Tierra



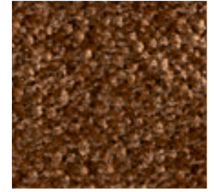
T3T
Anthracite Grey
Gris Antracita



T3U
White
Blanco



T3V
Grey
Gris



T3W
Rust Brown
Óxido

Aspen

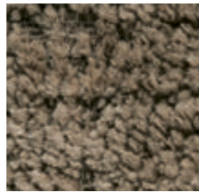
90% PL - 10% CO - gr/m² 430
Martindale 60.000 cicli/rubs - EN ISO 12947-2



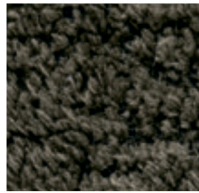
T2G
Hemp
Cáñamo



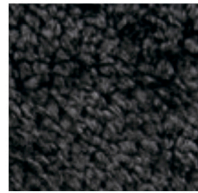
T2H
Sand
Arena



T2J
Taupe
Tórtola



T2K
Green
Verde



T2L
Anthracite Grey
Gris Antracita



T2M
Camel Brown
Color Camello



T2N
Grey
Gris

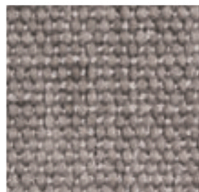
Cloud



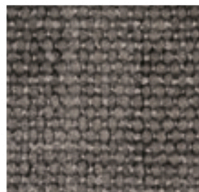
T4J
Hemp
Cáñamo



T4K
Sand
Arena



T4L
Ecreu
Crudo



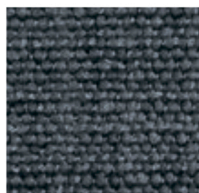
T4M
Taupe
Tórtola



T4N
Camel Brown
Color Camello



T4P
Old Rose
Rosa Viejo



T4Q
Blue
Azul



T4R
Anthracite Grey
Gris Antracita

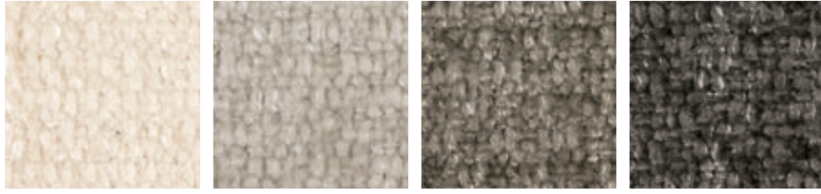


95%PL - 5% CO - gr/m² 560
Martindale >55.000 cicli/rubs - EN ISO 5470-2 Met.1

Category B / Categoría B



Queen

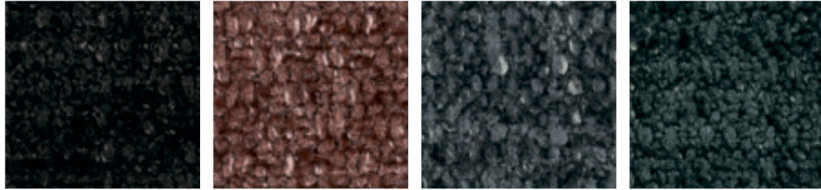


T4S
Hemp
Cáñamo

T4T
Sand
Arena

T4U
Ecru
Crudo

T4V
Taupe
Tórtola



T4W
Anthracite Grey
Gris Antracita

T4X
Old Rose
Rosa Viejo

T4Y
Calcite Blue
Azul Calcita

T4Z
Petrol Green
Verde Petróleo



100% PL gr/m² 562
Martindale >100.000 cicli/rubs - EN ISO 5470-2 Met.1

Sally



T3X
White
Blanco

T3Y
Sand
Arena

T3Z
Grey
Gris

T4A
Anthracite Grey
Gris Antracita

T4B
Brown
Marrón

T4C
Brick Red
Rojo Ladrillo

T4D
Green
Verde

100% PL gr/m² 536
Martindale 35.000 cicli/rubs - EN ISO 12947-2



Softer



SLR
Mud Brown
Tierra

SLS
Cognac
Coñac

SLT
Tobacco
Tabaco

T3M
Hemp
Cáñamo

T3N
Sand
Arena

T3P
Anthracite Grey
Gris Antracita

75% PVC - 22% PL - 3%PU gr/m² 680
Martindale >100.000 cicli/rubs - EN ISO 12947-2



Voss



S9F
White
Blanco

S9G
Sand
Arena

S9H
Grey
Gris

S9J
Black
Negro

S9K
Ice Blue
Azul Hielo

S9L
Forest Green
Verde Bosque

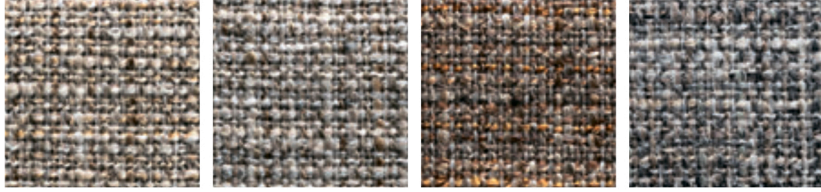
100% PL gr/m² 410
Martindale 60.000 cicli/rubs - EN ISO 12947-2



Category C / Categoría C



Kalix



S8P
Ecrú
Crudo

S8Q
Sand
Arena

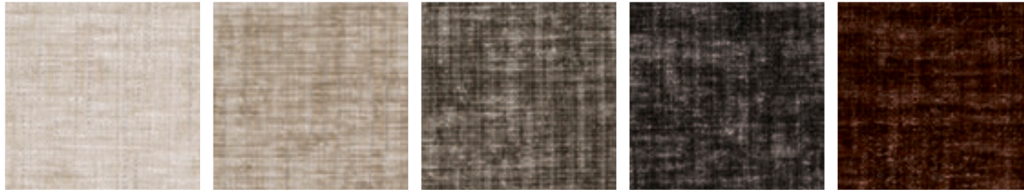
S8R
Brown
Marrón

S8S
grey
Gris



54% PC - 46% PL - gr/m² 440
Martindale 40.000 cicli/rubs - EN ISO 12947-2

Nobel



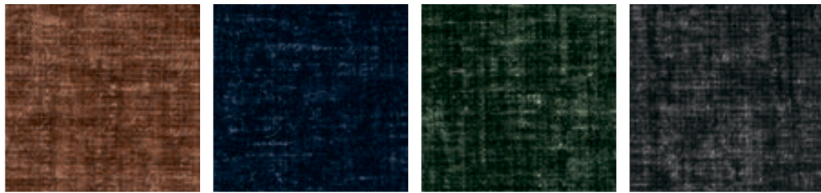
T5K
Hemp
Cáñamo

T5L
Ecrú
Crudo

T5M
Taupe
Tórtola

T5N
Dark Brown
Marrón Oscuro

T5P
Burnt Sienna
Tierra Quemada



T5Q
Caramel
Caramelo

T5R
Deep Blue
Azul Profundo

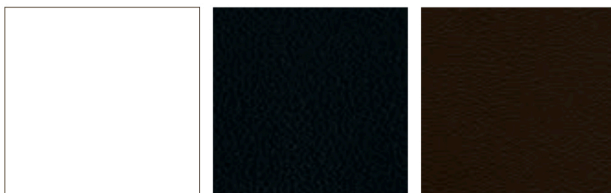
T5S
Forest Green
Verde Bosque

T5T
Grey
Gris



100%PL - gr/m² 400
Martindale >100.000 cicli/rubs - EN ISO 5470-2 Met.1

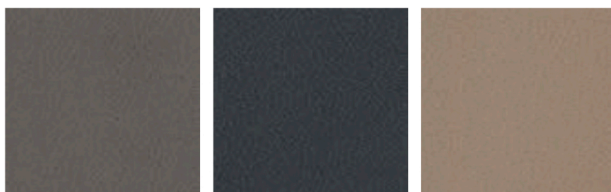
Skuba



S92
Optic white
Blanco óptico

S93
Black
Negro

S94
Coffee
Café



S95
Taupe
Tórtola

S96
Grey
Gris

S98
Nougat
Avellana

* Clean by using lukewarm water and mild soap only.

Limpiar utilizando sólo agua tibia y jabón neutro.

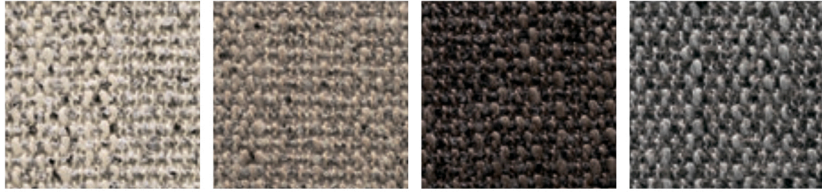


84% PVC - 10% PL - 6%PU - gr/m² 680
Martindale >100.000 cicli/rubs - EN ISO 5470-2 Met.1

Category D / Categoría D



Boemian

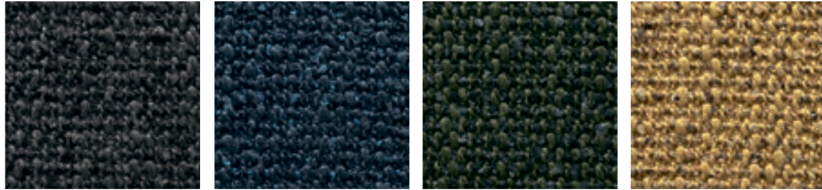


T2T
Sand
Arena

T2U
Taupe
Tórtola

T2V
Brown
Marrón

T2W
Grey
Gris



T2X
Anthracite Grey
Gris Antracita

T2Y
Blue
Azul

T2Z
Green
Verde

T3A
Yellow
Amarillo



51% Recycled Olefin - 27% PL - 22% PC gr/m² 550
Martindale 45.000 cicli/rubs - EN ISO 12947-2

Tailor



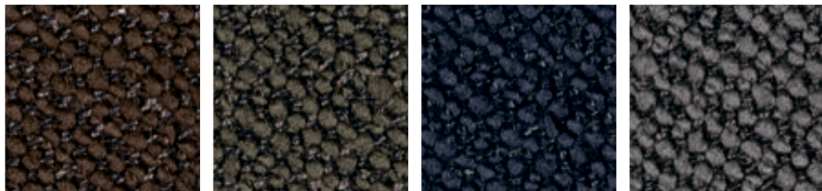
T6D
Hemp
Cáñamo

T6E
Sand
Arena

T6F
Stone Grey
Piedra

T6G
Taupe
Tórtola

T6H
Burnt Sienna
Tierra Quemada



T6J
Brown
Marrón

T6K
Pine Green
Verde Pino

T6L
Midnight Blue
Azul Noche

T6M
Smoke Grey
Gris Humo



97%PL - 3% LI gr/m² 678
Martindale >100.000 cicli/rubs - EN ISO 5470-2 Met.1

Category E / Categoría E



Bouclé



SLV
Hemp
Cáñamo

SLW
Anthracite grey
Antracita

SLX
Taupe
Tórtola

SSQ
Brick red
Rojo ladrillo



37% PL - 21% PC - 19% VI - 14% CO - 8% LI - 1% PA gr/m² 522
Martindale 40.000 cicli/rubs - EN ISO 12947-2

Paris

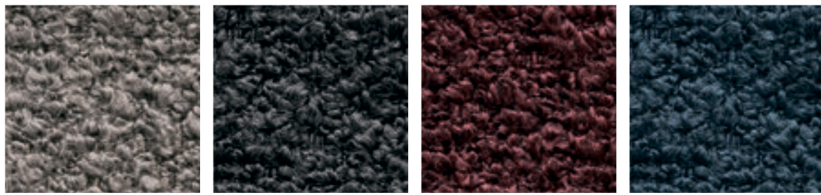


SQM
Cream
Vainilla

SQN
Beige

SQP
Brown
Marrón

SQO
Light grey
Gris claro



SQR
Taupe
Tórtola

SQS
Anthracite grey
Gris antracita

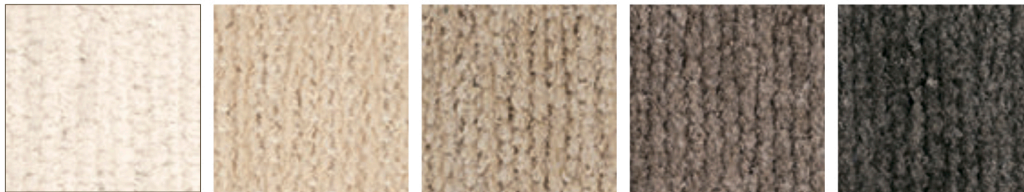
SQT
Burgundy
Burdeos

SQU
Blue
Azul



47% PC - 22% PL - 20% CO - 11% VI gr/m² 714
Martindale 40.000 cicli/rubs - EN ISO 12947-2

Savoy



T5U
White
Blanco

T5V
Hemp
Cáñamo

T5W
Ecreu
Crudo

T5X
Sand
Arena

T5Y
Taupe
Tórtola



T5Z
Cappuccino
Capuchino

T6A
Amber
Ámbar

T6B
Caramel
Caramelo

T6C
Grey
Gris



75% CO - 25% PL gr/m² 671
Martindale >40.000 cicli/rubs - EN ISO 5470-2 Met.1